



Accreditation no. 19898

LATTICE BOOM CRAWLER CRANE *Annual Report*

Company C & C Construction Services
Address 1 Sir Henry Parkes Avenue
MEDOWIE
State NSW
Postcode 2318

ABN 82 780 055 822
Representative Mr Peter Ritters
Phone 02 4982 8257
Email pritters@cccs.net.au

Make Kobelco
Model CKE 2500-2
Serial Number JD04-02714
Plant Number FCS061
Year of Manufacture 2013
Design Registration Number Q22828
Plant Registration MC6-210232/17/0
Max Load 250000
Upper Hours 5285



Country where assessed Australia
Operators Manual in English Yes
Crane Safety Manual No
State NSW
Log Book Yes

Assessed By Troy Kiem
Reg. No. NSW1082
Phone 0425 384 091
Email a1craneinspections@gmail.com
Company A1 Crane Inspections
Address P O Box 414 KURRI KURRI
State NSW
Postcode 2327

Initial Inspection Date 11/09/2017
Issued Date 12/09/2017
Expiry Date 14/10/2018

Conforms to Checklist Yes

This report is confirmation that the crane has undergone an annual inspection to the appropriate standard and is considered safe for continued operation at time of inspection.

Actions Required - NA

BOOM AND ATTACHMENTS

Boom Base Section	OK
Boom Foot Pins and Bushings	OK
Boom Inserts	OK
Boom Point Section	OK
Point Shaft and Sheaves	OK
Boom Point Guard	OK
Idler Sheaves	OK
Boom Hoist Limit	OK
Suspension Cables / Rods	OK
Intermediate Suspension	N/A
Cable Rollers - Guards	OK
Mast - Upper Spreader	OK
Backstops	OK
Gantry	OK
Lower Spreader	OK
Boom Angle Indicator	OK
Boom Base Sheave	N/A
Jib Base Section	N/A
Jib Point Section	N/A
Jib Inserts	N/A
Jib Struts	N/A
Jib Suspension Cables	N/A
Fairlead	N/A
Tag Line Winder	N/A
Luffing Jib(s)	N/A
Heavy Lift Attachments	N/A
Anemometer	OK
Boom Head	OK
Rooster Sheave	OK
Extension / Fly	N/A
HOOK BLOCKS	
Description	1 x Aux hook attached
Manufacturers Identification	OK - 174a00007f1
Safety Latches	OK
Sheaves and Bearings	N/A
Swivel	OK
Branded WLL	OK - 13.5t
Branded with Weight (Tare)	OK - 450kgs
HOOK BLOCKS No. 2	
Description	1 x main hook attached
Manufacturers Identification	OK - JJ73A11F2
Safety Latches	OK
Sheaves and Bearings	OK - 3
Swivel	OK
Branded WLL	OK - 70t
Branded with Weight (Tare)	OK - 1200kgs

Additional Comments on Boom and Attachments

All items marked OK either functioned and/or appeared Satisfactory. No previously recorded faults.

Accredited for compliance with ISO/IEC 17020

NATA is a signatory to the ILAC Mutual Recognition Arrangement for the mutual recognition of the equivalence of testing, medical testing, calibration and inspection reports

© The Crane Industry Council of Australia 2009

All CraneSafe forms, checklists, surveys, audits and reports together with the embedded methodology contained within are the intellectual property of The Crane Industry Council of Australia and may not be used without The Crane Industry Council of Australia's prior written consent.

REVOLVING FRAME AND CABIN

Frame - Structural	OK
Counterweight - Security	OK
Counterweight Lift Assembly	OK
A Frame	OK
Gear Case Cover(s)	OK
Gaskets and Seals	OK
Cab Glass and Mirrors	OK
Sheet Metal and Paint	OK
Seat Assembly	OK
Throttle	OK
Dead Man Controls	OK
Free Fall Lockout	N/A
Decals / Signs - In English	OK
Load Charts in English as per AS1418	OK
Control Levers - Clearly Marked	OK
Control Cables / Pilot Hoses	OK
Heater	OK
Air Conditioner	OK
Gauges	OK
Anti-Two block Alarms	OK
Horn	OK
Access Steps	OK
Doors and Locks	OK
Cab Mounts	OK
Front Wiper	OK
Roof Wiper	OK
Windscreen Wiper / Washer	OK
Switches and Relays	OK
Inclinometer	OK
Fire Extinguisher	OK

Additional Comments on Revolving Frame and Cabin

All items marked OK either functioned and/or appeared Satisfactory. No previously recorded faults.

SLEW SYSTEM

Slew Transmission & Oil Level	OK - Oil level internal, service records should confirm.
Leaks	OK
Swing Brake	OK - Internal.
Lock Valve(s)	OK
House Lock	OK
Slew Pinion	OK
Slew Gear	OK
Slewing Ring	OK
Base Weld	OK - Visually checked whilst loaded.
Smooth Operation	OK
Slew Bolts	OK - Visually checked whilst loaded.
Excessive Bearing Play	OK - No movement detected.
Excessive Backlash	OK
Electrical Swivel	N/A
Roller Path	N/A
Roller Circle	N/A
Hook Rollers	N/A
Slewing Rim	N/A

Additional Comments on Slew System

All items marked OK either functioned and/or appeared Satisfactory. No previously recorded faults.

REAR DRUMSHAFT (HOIST) WINCH

Winch Condition & Oil Level	OK - Oil level internal, service records should confirm.
Clutch Assembly	N/A
Clutch Band and Linings	N/A
Cylinder and Swivel	N/A
Brake Band and Lining	OK - Internal.
Brake Control Linkage	N/A
Operating Cylinder(s)	N/A
Drum Locking Pawl Mechanism	OK
Clutch Drum(s)	N/A
Lagging	N/A
Wire Rope	OK - Laying well. Visually checked wear.
Planetary Drum and Pinions	N/A
Planetary Band and Lining	N/A
Operating Cylinder(s)	N/A
Brake Control Linkage	N/A
Gear Case Seal(s)	N/A

Additional Comments on Rear Drumshaft (Hoist) Winch

All items marked OK either functioned and/or appeared Satisfactory. No previously recorded faults.

Accredited for compliance with ISO/IEC 17020

NATA is a signatory to the ILAC Mutual Recognition Arrangement for the mutual recognition of the equivalence of testing, medical testing, calibration and inspection reports

© The Crane Industry Council of Australia 2009

All CraneSafe forms, checklists, surveys, audits and reports together with the embedded methodology contained within are the intellectual property of The Crane Industry Council of Australia and may not be use without The Crane Industry Council of Australia's prior written consent.

MAIN HOIST ASSEMBLY WINCH

Winch Condition & Oil Level	OK - Oil level internal, service records should confirm.
Clutch Assembly	N/A
Clutch Band and Linings	N/A
Cylinder and Swivel	N/A
Planetary Band and Lining	N/A
Brake Band and Lining	OK - Internal.
Pawls and Linkage	OK
Operating Cylinder(s)	N/A
Drums and Wire rope	OK - Shinko style
Boom Hoist Chaincase	N/A
Shaft Assembly	N/A

Additional Comments on Main Hoist Assembly Winch

All items marked OK either functioned and/or appeared Satisfactory. No previously recorded faults.

AUXILIARY HOIST ASSEMBLY WINCH

Winch Condition & Oil Level	OK - Oil level internal, service records should confirm.
Clutch Assembly	N/A
Clutch Band and Linings	N/A
Cylinder and Swivel	N/A
Planetary Band and Lining	N/A
Brake Band and Lining	OK - Internal.
Pawls and Linkage	OK
Operating Cylinder(s)	N/A
Drums and Wire rope	OK - Shinko style
Boom Hoist Chaincase	N/A
Shaft Assembly	N/A

Additional Comments on Auxiliary Hoist Assembly Winch

All items marked OK either functioned and/or appeared Satisfactory. No previously recorded faults.

THIRD DRUM ASSEMBLY WINCH - NA

HYDRAULIC SYSTEM

Hydraulic Reservoir & Oil Level	OK
Return Filters and Housing	OK
Suction Lines and Hoses	OK
Oil Cooler(s)	OK
Main Pump(s)	OK
Slew Pump	OK
Pilot Pump	OK
Relief Valves	OK
Pressure Filter and Housing	OK
Slew Motor	OK
Slew Valve	OK
Main Winch Motor	OK
Auxiliary Winch Motor	OK
Main Winch Valve	OK
Auxiliary Winch Valve	OK
Pressure Lines and Hoses	OK
Accumulator	OK
Carbody Hydraulic System	OK
Hydraulic Swivel	OK
Hoses and Tubes	OK
Propel Transmission	N/A
Propel Motors	N/A
Relief Valves	N/A
Propel Brake	N/A
Axle Extension	N/A
Control Valve	OK
Horizontal Cylinders	N/A
Vertical Cylinders	OK

Additional Comments on Hydraulic System

All items marked OK either functioned and/or appeared Satisfactory. No previously recorded faults.

AIR SYSTEMS - NA**ELECTRICAL SYSTEMS**

Battery Box	OK
Battery Cables	OK
Battery Isolator	OK
Starter	OK
Clearance Lights	N/A
Flood Lights	OK
Circuit Breakers	OK
Travel Alarm	OK
Switches and Relays	OK
Slew Alarm	OK

Additional Comments on Electrical Systems

All items marked OK either functioned and/or appeared Satisfactory. No previously recorded faults.

Accredited for compliance with ISO/IEC 17020

NATA is a signatory to the ILAC Mutual Recognition Arrangement for the mutual recognition of the equivalence of testing, medical testing, calibration and inspection reports

© The Crane Industry Council of Australia 2009

All CraneSafe forms, checklists, surveys, audits and reports together with the embedded methodology contained within are the intellectual property of The Crane Industry Council of Australia and may not be used without The Crane Industry Council of Australia's prior written consent.

DRIVE SYSTEM

Radiator & Coolant Level	OK
Radiator Hoses	OK
Fan	OK
Fan Guard	OK
Oil Cooler(s)	OK
Fuel Lines	OK
Throttle	OK
Engine Oil Pressure & Oil Level	OK
Engine Mounts	OK
Power Transmission Belts	N/A
Muffler / Spark Arrestor	OK
Abnormal Engine Noises	OK
Fuel Tank & Diesel Level	OK
Engine Warning System	OK
Drive Coupling	OK
Pump Drives	OK
Pump Disconnects (PTO)	N/A

Additional Comments on Drive System

All items marked OK either functioned and/or appeared Satisfactory. No previously recorded faults.

CRAWLER INSPECTION

Paint	OK
Decals / Signs - In English	OK
Carbody and Crawler Frames	OK
Side Frames and Axles	OK
Connecting Bolts	OK
Drive Sprockets	OK
Idler Sprockets	OK
Crawler Rollers	OK
Pins and Bushings	OK
Roller Guards	OK
Rail Assembly	OK
Track Adjuster	OK
Tension Spring Assembly	N/A
Track Shoes	OK
Propel Chains	N/A
Propel Clutch Shaft	N/A
Clutch Drum(s)	N/A
Clutch Assembly	N/A
Band and Lining	N/A
Cylinders and Swivel	N/A
Bevel Gears	N/A
Vertical Propel Shaft	N/A
Horizontal Propel Shaft	N/A
Outboard Propel Shafts	N/A
Propel Shaft Extension	N/A
Steering Assembly	N/A
Brake Drums	N/A
Crawler Brake Assembly	N/A
Carbody	OK
Hydraulic Drive	OK
Planetary Reductions	OK
Drive Motors	OK

Additional Comments on Crawler Inspection

All items marked OK either functioned and/or appeared Satisfactory. No previously recorded faults.

Accredited for compliance with ISO/IEC 17020

NATA is a signatory to the ILAC Mutual Recognition Arrangement for the mutual recognition of the equivalence of testing, medical testing, calibration and inspection reports

© The Crane Industry Council of Australia 2009

All CraneSafe forms, checklists, surveys, audits and reports together with the embedded methodology contained within are the intellectual property of The Crane Industry Council of Australia and may not be use without The Crane Industry Council of Australia's prior written consent.

FUNCTIONAL TESTS - MAIN WINCH

Load Chart Reference Number C.M.N
 Printed Chart - No Load OK

	Printed Chart	Rated Capacity Indicator
Boom Angle, deg	N/A	N/A
Boom Length, m	48.00	48.00
Radius, m	42.00	42.00
Load, kg	13,700.00	13,700.00

RCI Load Charts 75%

Load Chart Reference Number C.M.N
 Rated Load in Stability OK - Unable to reach full cutout due to weights available.

	Rated Capacity Indicator	Measured
Radius, m	42.10	42.00
Load, kg	10,900.00	10,710.00

Line Pull Test OK - 10710 + hook weight and rigging = 12t approx

	Rated Capacity Indicator	Measured
Load, kg	10,900.00	10,710.00

Winch Brake Test OK

	Rated Capacity Indicator	Measured
Load, kg	10,900.00	10,710.00

Overload Warning Lights and Alarms OK

Additional Comments on Functional Tests - Main Winch

RCL and the RCI accuracy confirmed within acceptable tolerances. available test weights didn't exceed the lowest MRC. Accuracy of the RCL and load chart confirmed.

Accredited for compliance with ISO/IEC 17020

NATA is a signatory to the ILAC Mutual Recognition Arrangement for the mutual recognition of the equivalence of testing, medical testing, calibration and inspection reports

© The Crane Industry Council of Australia 2009

All CraneSafe forms, checklists, surveys, audits and reports together with the embedded methodology contained within are the intellectual property of The Crane Industry Council of Australia and may not be used without The Crane Industry Council of Australia's prior written consent.

FUNCTIONAL TESTS - AUXILIARY WINCH

Load Chart Reference Number C.M.N
 Rated Load in Stability OK

	Rated Capacity Indicator	Measured
Radius, m	40.20	40.20
Load, kg	11,500.00	10,710.00

Line Pull Test

OK - 10710 + hook weight and rigging = 11t approx

	Rated Capacity Indicator	Measured
Load, kg	11,500.00	10,710.00

Winch Brake Test

OK

	Rated Capacity Indicator	Measured
Load, kg	11,500.00	10,710.00

Overload Warning Lights and Alarms

OK

Additional Comments on Functional Tests - Auxiliary Winch

RCL and the RCI accuracy confirmed within acceptable tolerances. available test weights didn't exceed the lowest MRC. Accuracy of the RCL and load chart confirmed.

CRACK INSPECTION

No Cracks Detected

OK - No current NDT report found.

Additional Comments on Crack Inspection

Annual independent third party VISUAL inspection completed. Crack inspection carried out during and after the load testing. No visible or previously recorded cracks found.

ADDITIONAL ANNUAL INSPECTIONS STIPULATED BY THE MANUFACTURER

Note

OK - Service History (Available). Log book-Pre/Start entries available (Located in the crane cabin: previously logged faults). This report is: Prepared for the date of inspection: Not confirming all global standards: Not a pre-purchase report. No responsibility

Accredited for compliance with ISO/IEC 17020

NATA is a signatory to the ILAC Mutual Recognition Arrangement for the mutual recognition of the equivalence of testing, medical testing, calibration and inspection reports

© The Crane Industry Council of Australia 2009

All CraneSafe forms, checklists, surveys, audits and reports together with the embedded methodology contained within are the intellectual property of The Crane Industry Council of Australia and may not be use without The Crane Industry Council of Australia's prior written consent.

APPENDICES

CRANE

Model



Serial Number



Upper Hours



Accredited for compliance with ISO/IEC 17020

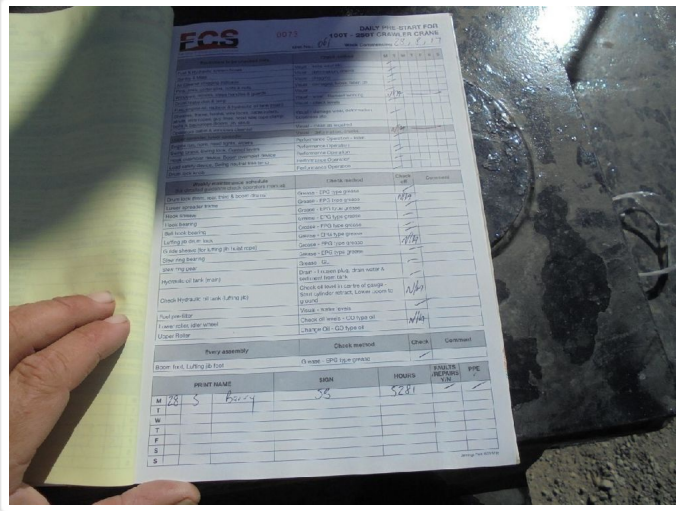
NATA is a signatory to the ILAC Mutual Recognition Arrangement for the mutual recognition of the equivalence of testing, medical testing, calibration and inspection reports

© The Crane Industry Council of Australia 2009

All CraneSafe forms, checklists, surveys, audits and reports together with the embedded methodology contained within are the intellectual property of The Crane Industry Council of Australia and may not be used without The Crane Industry Council of Australia's prior written consent.

ASSESSMENT

Log Book



BOOM AND ATTACHMENTS

Manufacturers Identification



Manufacturers Identification
Suggested Hazard striping be installed. Operator was rectifying.

FUNCTIONAL TESTS - MAIN WINCH

Load Chart Reference Number

L-73300-2 (STANDARD) BOOM - MAIN HOOM RATED LOADS
 Main Hoop Capacity (t)
 (Wind: 20m/s, 30m/s, and 35m/s)

Load (t)	13.0m	15.0m	17.0m	19.0m	21.0m	23.0m	25.0m	27.0m	29.0m	31.0m	33.0m	35.0m	37.0m	39.0m	41.0m	43.0m	45.0m	47.0m	49.0m	51.0m
10.0	10.0	10.0	10.0	10.0	10.0	10.0	10.0	10.0	10.0	10.0	10.0	10.0	10.0	10.0	10.0	10.0	10.0	10.0	10.0	10.0
12.5	12.5	12.5	12.5	12.5	12.5	12.5	12.5	12.5	12.5	12.5	12.5	12.5	12.5	12.5	12.5	12.5	12.5	12.5	12.5	12.5
15.0	15.0	15.0	15.0	15.0	15.0	15.0	15.0	15.0	15.0	15.0	15.0	15.0	15.0	15.0	15.0	15.0	15.0	15.0	15.0	15.0
17.5	17.5	17.5	17.5	17.5	17.5	17.5	17.5	17.5	17.5	17.5	17.5	17.5	17.5	17.5	17.5	17.5	17.5	17.5	17.5	17.5
20.0	20.0	20.0	20.0	20.0	20.0	20.0	20.0	20.0	20.0	20.0	20.0	20.0	20.0	20.0	20.0	20.0	20.0	20.0	20.0	20.0
22.5	22.5	22.5	22.5	22.5	22.5	22.5	22.5	22.5	22.5	22.5	22.5	22.5	22.5	22.5	22.5	22.5	22.5	22.5	22.5	22.5
25.0	25.0	25.0	25.0	25.0	25.0	25.0	25.0	25.0	25.0	25.0	25.0	25.0	25.0	25.0	25.0	25.0	25.0	25.0	25.0	25.0
27.5	27.5	27.5	27.5	27.5	27.5	27.5	27.5	27.5	27.5	27.5	27.5	27.5	27.5	27.5	27.5	27.5	27.5	27.5	27.5	27.5
30.0	30.0	30.0	30.0	30.0	30.0	30.0	30.0	30.0	30.0	30.0	30.0	30.0	30.0	30.0	30.0	30.0	30.0	30.0	30.0	30.0
32.5	32.5	32.5	32.5	32.5	32.5	32.5	32.5	32.5	32.5	32.5	32.5	32.5	32.5	32.5	32.5	32.5	32.5	32.5	32.5	32.5
35.0	35.0	35.0	35.0	35.0	35.0	35.0	35.0	35.0	35.0	35.0	35.0	35.0	35.0	35.0	35.0	35.0	35.0	35.0	35.0	35.0
37.5	37.5	37.5	37.5	37.5	37.5	37.5	37.5	37.5	37.5	37.5	37.5	37.5	37.5	37.5	37.5	37.5	37.5	37.5	37.5	37.5
40.0	40.0	40.0	40.0	40.0	40.0	40.0	40.0	40.0	40.0	40.0	40.0	40.0	40.0	40.0	40.0	40.0	40.0	40.0	40.0	40.0
42.5	42.5	42.5	42.5	42.5	42.5	42.5	42.5	42.5	42.5	42.5	42.5	42.5	42.5	42.5	42.5	42.5	42.5	42.5	42.5	42.5
45.0	45.0	45.0	45.0	45.0	45.0	45.0	45.0	45.0	45.0	45.0	45.0	45.0	45.0	45.0	45.0	45.0	45.0	45.0	45.0	45.0
47.5	47.5	47.5	47.5	47.5	47.5	47.5	47.5	47.5	47.5	47.5	47.5	47.5	47.5	47.5	47.5	47.5	47.5	47.5	47.5	47.5
50.0	50.0	50.0	50.0	50.0	50.0	50.0	50.0	50.0	50.0	50.0	50.0	50.0	50.0	50.0	50.0	50.0	50.0	50.0	50.0	50.0
52.5	52.5	52.5	52.5	52.5	52.5	52.5	52.5	52.5	52.5	52.5	52.5	52.5	52.5	52.5	52.5	52.5	52.5	52.5	52.5	52.5
55.0	55.0	55.0	55.0	55.0	55.0	55.0	55.0	55.0	55.0	55.0	55.0	55.0	55.0	55.0	55.0	55.0	55.0	55.0	55.0	55.0
57.5	57.5	57.5	57.5	57.5	57.5	57.5	57.5	57.5	57.5	57.5	57.5	57.5	57.5	57.5	57.5	57.5	57.5	57.5	57.5	57.5
60.0	60.0	60.0	60.0	60.0	60.0	60.0	60.0	60.0	60.0	60.0	60.0	60.0	60.0	60.0	60.0	60.0	60.0	60.0	60.0	60.0
62.5	62.5	62.5	62.5	62.5	62.5	62.5	62.5	62.5	62.5	62.5	62.5	62.5	62.5	62.5	62.5	62.5	62.5	62.5	62.5	62.5
65.0	65.0	65.0	65.0	65.0	65.0	65.0	65.0	65.0	65.0	65.0	65.0	65.0	65.0	65.0	65.0	65.0	65.0	65.0	65.0	65.0
67.5	67.5	67.5	67.5	67.5	67.5	67.5	67.5	67.5	67.5	67.5	67.5	67.5	67.5	67.5	67.5	67.5	67.5	67.5	67.5	67.5
70.0	70.0	70.0	70.0	70.0	70.0	70.0	70.0	70.0	70.0	70.0	70.0	70.0	70.0	70.0	70.0	70.0	70.0	70.0	70.0	70.0
72.5	72.5	72.5	72.5	72.5	72.5	72.5	72.5	72.5	72.5	72.5	72.5	72.5	72.5	72.5	72.5	72.5	72.5	72.5	72.5	72.5
75.0	75.0	75.0	75.0	75.0	75.0	75.0	75.0	75.0	75.0	75.0	75.0	75.0	75.0	75.0	75.0	75.0	75.0	75.0	75.0	75.0
77.5	77.5	77.5	77.5	77.5	77.5	77.5	77.5	77.5	77.5	77.5	77.5	77.5	77.5	77.5	77.5	77.5	77.5	77.5	77.5	77.5
80.0	80.0	80.0	80.0	80.0	80.0	80.0	80.0	80.0	80.0	80.0	80.0	80.0	80.0	80.0	80.0	80.0	80.0	80.0	80.0	80.0
82.5	82.5	82.5	82.5	82.5	82.5	82.5	82.5	82.5	82.5	82.5	82.5	82.5	82.5	82.5	82.5	82.5	82.5	82.5	82.5	82.5
85.0	85.0	85.0	85.0	85.0	85.0	85.0	85.0	85.0	85.0	85.0	85.0	85.0	85.0	85.0	85.0	85.0	85.0	85.0	85.0	85.0
87.5	87.5	87.5	87.5	87.5	87.5	87.5	87.5	87.5	87.5	87.5	87.5	87.5	87.5	87.5	87.5	87.5	87.5	87.5	87.5	87.5
90.0	90.0	90.0	90.0	90.0	90.0	90.0	90.0	90.0	90.0	90.0	90.0	90.0	90.0	90.0	90.0	90.0	90.0	90.0	90.0	90.0
92.5	92.5	92.5	92.5	92.5	92.5	92.5	92.5	92.5	92.5	92.5	92.5	92.5	92.5	92.5	92.5	92.5	92.5	92.5	92.5	92.5
95.0	95.0	95.0	95.0	95.0	95.0	95.0	95.0	95.0	95.0	95.0	95.0	95.0	95.0	95.0	95.0	95.0	95.0	95.0	95.0	95.0
97.5	97.5	97.5	97.5	97.5	97.5	97.5	97.5	97.5	97.5	97.5	97.5	97.5	97.5	97.5	97.5	97.5	97.5	97.5	97.5	97.5
100.0	100.0	100.0	100.0	100.0	100.0	100.0	100.0	100.0	100.0	100.0	100.0	100.0	100.0	100.0	100.0	100.0	100.0	100.0	100.0	100.0

Rated Load in Stability - Load RCI



Rated Load in Stability - Load Measured



FCS SERVICE REPORT

Service No. 18 0368

CUSTOMER: FCS
 ADDRESS: COBAR
 CONTACT PHONE: _____

MACHINE MAKE: KOBELCO
 MODEL: CKE2500-2
 SERIAL NUMBER: 3504-02714
 HOUR METER: 4909

A. General Maintenance - Visual Inspection

	OK	POTENTIAL	URGENT	Comments
1 Oil Leaks	/			
2 ROPS Protection	/			
3 Main Frame	/			
4 Boom Arms	/			
5 Bob Tach (wedges & linkage)	/			
6 Tyre/Track Condition	/			
7 Axles (Leaks)	/			

B. Operational Checks

	1	2	3	Comments
8 Throttle	/			
9 Pedal Linkage & Auxillary	/			
10 Steering Creep (return to Neutral)	/			
11 Exhaust Smoke	/			
12 Check Preheaters	/			
13 Indicator Lights	/			
a Hydro Filter	/			
b Engine Oil Pressure	/			
c Engine Temperature	/			
d Alternator Charge	/			
e Hourmeter	/			
14 Check Ignition Switch	/			
15 Fuel Gauge	/			
16 Lights	/			

C. General Maintenance

	1	2	3	Comments
17 Check Engine Oil Level	/			
18 Check Engine Oil Leaks	/			
19 Alternator (check mount)	/			
20 Check Alternator Belt	/			
21 Check Angle Drive Belt	/			
22 Check Pump Drive Belt	/			
23 Inspect Engine Mounts	/			
24 Starter Mount Bolts	/			
25 Empty Water Trap (if applic)	/			
26 Battery (water & terminals)	/			
27 Inspect Bob Tach Lever Operation	/			
28 Check Chaincase Oil Level	/			
29 Check Hydraulic Fluid Level	/			

D. Last Filter Change Date

	OK	POTENTIAL	URGENT	Comments
30 Engine	/			
31 Fuel	/			
32 Hydrostatic	/			
33 Air Primary	/			
34 Air Secondary	/			

E. Cooling System

	1	2	3	Comments
35 Check Coolant Level	/			
36 Fan Blade Condition (if applic)	/			
37 Hose Connections	/			
38 Water Pump (leaks)	/			

F. Roll Up Cab

	1	2	3	Comments
39 Check Pump Mount	/			
40 Check Steer Bolts	/			
41 Check for Leaks	/			

G. Cylinder Check

	1	2	3	Comments
42 Check Lift/Tilt Cylinders For Leaks	/			
43 Check Bucket Cylinder For Leaks	/			
44 Check Hoses For Wear	/			

H. Safety Check

	1	2	3	Comments
45 Seat Bar Operation	/			
46 Lift & Tilt Pedal Locks	/			
47 Parking Brake	/			
48 Lift Override Valve	/			
49 Seat Belts (damage/latch operation)	/			
50 ROPS Fasteners Secure	/			
51 Decals	/			

Comments

INSPECTED BY: DB DATE: 30-5-17

CUSTOMER SIGNATURE: _____ DATE: _____